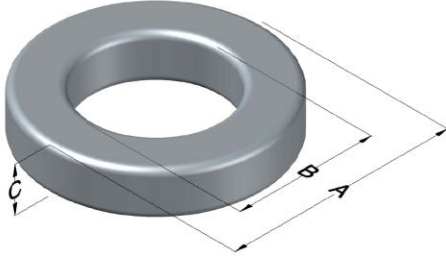




C055050A2

110 Delta Drive
 Pittsburgh, PA 15238
 NAFTA Sales: (1)800-245-3984
 HK Sales : (852)3102-9337
 magnetics@spang.com
 www.mag-inc.com



MPP Permeability (μ)	A_L (nH/T ²)	Core Marking			Coating Color
		Lot Number	Part Number	Inductance Grade	
125	56 ± 8%	XXXXXX	050A2	X	Gray

Dimensions	Uncoated		Coated Limits			Packaging
	(mm)	(in)	(mm)	(in)		
OD (A)	12.7	0.500	13.5	0.530	max	Bulk Pack 4 bags/box Box Qty= 5000 pcs
ID (B)	7.62	0.300	6.98	0.275	min	
HT (C)	4.75	0.187	5.52	0.217	max	

Electrical Characteristics			Physical Characteristics						
Watt Loss @ 100 kHz, 100mT max(mW/cm ³)	DC Bias min (oersteds)		Voltage Breakdown wire to wire min (V _{AC})	Break Strength min (kg)	Window Area W _A (mm ²)	Cross Section A _e (mm ²)	Path Length L _e (mm)	Volume V _e (mm ³)	Weight (g)
	80%	50%							
900	25.0	48.5	1000	15.0	38.3	10.9	31.2	340	3.1

Winding Information					Temperature Rating	
Winding Length Per Turn				Wound Coil Dimensions (mm)		Curie Temp: 460 °C
Winding Factor	(mm)	Winding Factor	(mm)	40% Winding Factor		Coating Temp (Continuous up to): 200 °C
				OD	14.6	Notes:
0%	17.5	40%	21.1	HT	7.66	
				Completely Full Window		
20%	19.3	45%	21.7	Max HT	11.5	
25%	19.8	50%	22.1	Surface Area (mm ²)		
30%	20.1	60%	23.2	Unwound Core	560	
35%	20.7	70%	24.5	40% Winding Factor	800	

Typical DC Bias Performance

